

# Harvey Run Trail



## GENERAL TRAIL INFORMATION:

The Harvey Run Trail was established through a partnership of Chadds Ford Township and the Brandywine Conservancy & Museum of Art. This trailhead provides users access to a 5-mile natural surface trail network stretching through 300 acres of preserved open space. Parking for the trail is available at the Township building, located at 10 Ring Road and also at the

Brandywine River Museum located at 1 Hoffman's Mill Road in Chadds Ford. The trail is open from Sunrise to Sunset and please note the below information regarding rules and regulations for its use. Be sure and follow the green arrows for the Harvey Run Trail and please see the below links for the signage located in the Township's parking lot and also at the Township's bridge location.

**\* Harvey Run Trail is not maintained in winter.\***

- [HRT Map 1 located in Township Parking Lot](#)
- [All Trails Map 2 near bridge](#)

---

## Trail Use Rules & Regulations:

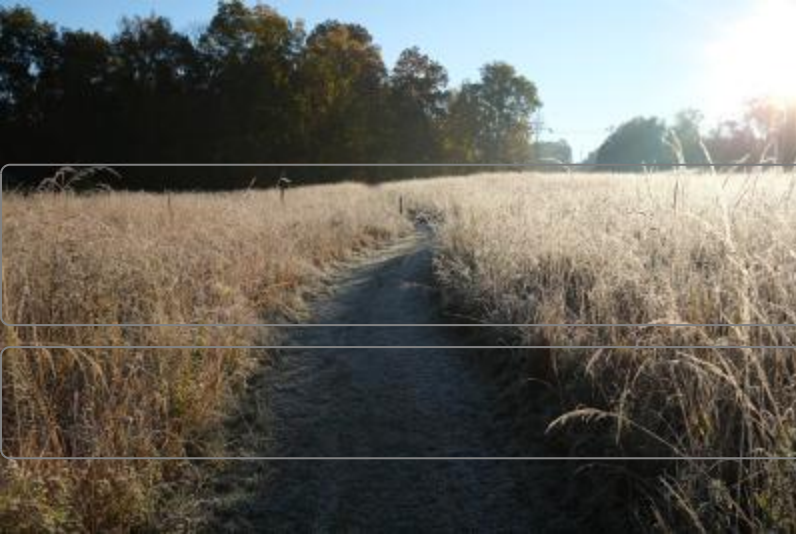
The Harvey Run Trail is a grass mowed surface trail for pedestrian use only. It is open from Sunrise to Sunset. [See the Township's Ordinance regulating trail use.](#)

---

**Brandywine Creek Greenway App:** [Download the new Brandywine Creek Greenway App.](#) The app developed by the Brandywine Conservancy is GPS-enabled and by default will display a list of the closest places to the user's current location, which places include over 100 parks and preserves open to the public within the Greenway.

*The Harvey Run Trail project was financed in part by a grant from the Commonwealth of Pennsylvania, Commonwealth Financing Authority.*

## Supporting Documents



HRT Map 1 located in Township Parking  
Lot 987.01 KB

All Trails Map 2 Near Bridge 1.08 MB